

Bubble-Free & High-Quality Sample Preparation

Compact Pressure Technology | Odor-Free Curing Process | High-quality Specimens

SPECIFICATION	ThetaMount DESCRIPTION
Operating Pressure	2.0 bar
Safety Valve Overflow Pressure	2.8~3.3bar
Chamber Diameter	9.3 x 6.7-inch (235 x 170mm)
Dimension (W*D*H)	Closed: 12.1 x 16.3 x 11.4-inch (308 x 415 x 289mm) Open: 12.1 x 16.3 x 13.5-inch (308 x 415 x 342mm)
Weight	18.8 lbs (8.5kg)



Achieve High-Quality Specimens with ThetaMount

The ThetaMount Pressure Cold Mounting Machine uses advanced pressure technology, achieving up to 2 bar. This ensures bubble-free specimens, maintaining the original properties of the resin and curing agent. Ideal for rapid curing of all cold mounting resins, ThetaMount produces high-quality specimens efficiently.

Compact Design & Efficient Performance

ThetaMount's compact pressure technology allows for quick pressure increase, ensuring fast and effective specimen preparation. The process guarantees bubble-free specimens, resulting in reliable samples.

Preserved Properties & Pleasant Operation

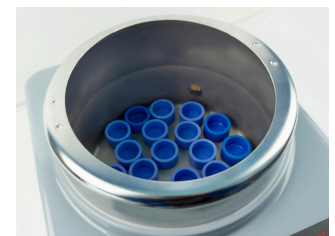
ThetaMount maintains the original properties of the resin and curing agent, ensuring consistent results. Additionally, the machine operates without unpleasant smells, making the working environment comfortable and safe.

Optimal Sample Preparation

With ThetaMount, sample preparation is efficient and of excellent quality. The design and features ensure a quick and effective curing process, making it a valuable addition to any laboratory focused on high-quality specimens.



Compact design, easy to operate



High-quality & consistent results



Acrylic Castable Mounting:

Castable acrylics are easy to use and are very robust. The main advantage of mounting with castable acrylics is the fast curing time. Depending upon the mixing ratio, castable acrylic mounts are typically ready to use within 8-15 minutes. Also unlike epoxy resins, the ratio of the various acrylic parts (powder to liquid) can be altered up to 25% with no adverse effects to the final properties of the mount. This is because both the liquid and powder are acrylics containing various additives and curing agents. By varying the ratio of the liquid to powder, the curing time and viscosity can be altered.



CASTAMOUNT Acrylic kit

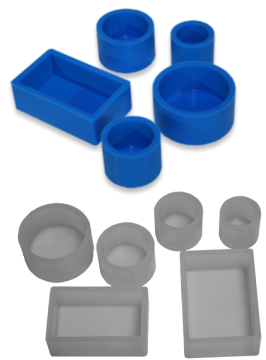
CASTAMOUNT Acrylic Liquids

Acrylic Castable Mounting	CATALOG
CASTAMOUNT Acrylic kit (1 lb resin with 12 oz liquid hardener)	AK-5000-K1
CASTAMOUNT Acrylic kit (5 lbs resin with 1/2 gallon liquid hardener)	AK-5000-K5
CASTAMOUNT Acrylic Powders	
CASTAMOUNT Acrylic powder (1 lb)	AR-5000-P1
CASTAMOUNT Acrylic powder (5 lb)	AR-5000-P5
CASTAMOUNT Acrylic powder (25 lbs)	AR-5000-P25
CASTAMOUNT Acrylic powder (100 lbs)	AR-5000-P100
CASTAMOUNT Acrylic Liquids	
CASTAMOUNT Acrylic hardener (12 oz)	AH-5000-H12
CASTAMOUNT Acrylic hardener (32 oz)	AH-5000-H32
CASTAMOUNT Acrylic hardener (1/2 gallon)	AH-5000-H64
CASTAMOUNT Acrylic hardener (1 gallon)	AH-5000-H128
CASTAMOUNT Acrylic hardener (5 gallons)	AH-5000-H640

ACRYLIC PLUS Acrylics Castable Mounting	CATALOG#
ACRYLIC PLUS Castable Mounting Resin Kit (1 lb resin with 12 oz liquid hardener)	ACYP-5000-K1
ACRYLIC PLUS Castable Mounting Resin Kit (5 lbs resin with 1/2 gallon liquid hardener)	ACYP-5000-K5
ACRYLIC PLUS Acrylic Powders	
ACRYLIC PLUS Resin powder (1 lb)	ACYP-5000-P1
ACRYLIC PLUS Resin powder (5 lb)	ACYP-5000-P5
ACRYLIC PLUS Resin powder (25 lbs)	ACYP-5000-P25
ACRYLIC PLUS Resin powder (100 lbs)	ACYP-5000-P100
ACRYLIC PLUS Acrylic Liquids	
ACRYLIC PLUS Resin hardener (12 oz)	ACYP-5000-H12
ACRYLIC PLUS Resin hardener (32 oz)	ACYP-5000-H32
ACRYLIC PLUS Resin hardener (1/2 gallon)	ACYP-5000-H64
ACRYLIC PLUS Resin hardener (1 gallon)	ACYP-5000-H128
ACRYLIC PLUS Resin hardener (5 gallons)	ACYP-5000-H640

SUPERMOUNT Glass Filled Acrylics Castable Mounting	CATALOG#
SUPERMOUNT Glass Filled Acrylic Kit (gray) (1 lb resin with 12 oz liquid hardener)	GKAK-5000-K1
SUPERMOUNT Glass Filled Acrylic Kit (gray) (5 lbs resin with 1/2 gallon liquid hardener)	GKAK-5000-K5
SUPERMOUNT PLUS Acrylic Powders	
ACRYLIC PLUS Resin powder (1 lb)	GRAR-5000-P1
ACRYLIC PLUS Resin powder (5 lb)	GRAR-5000-P5
ACRYLIC PLUS Resin powder (25 lbs)	GRAR-5000-P25
ACRYLIC PLUS Resin powder (100 lbs)	GRAR-5000-P100
SUPERMOUNT Acrylic Liquids	
SUPERMOUNT Resin hardener (12 oz)	GRAH-5000-H12
SUPERMOUNT Resin hardener (32 oz)	GRAH-5000-H32
SUPERMOUNT Resin hardener (1/2 gallon)	GRAH-5000-H64
SUPERMOUNT Resin hardener (1 gallon)	GRAH-5000-H128
SUPERMOUNT Resin hardener (5 gallons)	GRAH-5000-H640

Silicon Rubber Molds	Blue Molds	Clear Molds
1.0-inch diameter Silicone Rubber Molds - 3/pkg	RMOUNT-0100	RMOUNT-0100C
1.25-inch diameter Silicone Rubber Molds - 3/pkg	RMOUNT-0125	RMOUNT-0125C
1.5-inch diameter Silicone Rubber Molds - 3/pkg	RMOUNT-0150	RMOUNT-0150C
2.0-inch diameter Silicone Rubber Molds - 3/pkg	RMOUNT-0200	RMOUNT-0200C
2.75 x 1-1/2 x 7/8-inch (70 x 39 x 22 mm) Silicone Rubber Molds	RMOUNT-315R	RMOUNT-315C
3 x 2 x 7/8-inch (76 x 51 x 22 mm) Silicone Rubber Molds	RMOUNT-315R	RMOUNT-302C



Silicon Rubber Molds

Epoxy Castable Mounting:

The most common and best performing castable resins are epoxy based. Epoxy resins are typically two-part liquid systems consisting of a resin and hardener. Mixing ratios vary depending upon the volume of the mixture or the mount size. Larger mounts require a ratio of less hardener to resin. The advantages of mounting with epoxy resins include:

- Low shrinkage
- Relatively clear
- Relatively low exotherm
- Excellent adhesion
- Excellent chemical resistance
- Good hardness
- Relatively inexpensive



Standard Epoxy Cure

Standard Epoxy Resin

CATALOG#

Epoxy castable resin (32 oz)	EP-3000-32
Epoxy castable resin (1 gallon)	EP-3000-128
Epoxy castable resin (5 gallons)	EP-3000-5G

Standard Epoxy Hardeners

Epoxy hardener (8 oz)	EH-3000-08
Epoxy hardener (32 oz)	EH-3000-32
Epoxy hardener (1 gallon)	EH-3000-128

EPOXY PLUS Resin

Epoxy castable resin (32 oz)	EP-3000-32P
Epoxy castable resin (1 gallon)	EP-3000-128P
Epoxy castable resin (5 gallons)	EP-3000-5GP

Epoxy PLUS Hardeners

Epoxy hardener (8 oz)	EH-3000-08P
Epoxy hardener (32 oz)	EH-3000-32P
Epoxy hardener (1 gallon)	EH-3000-128P

Quick Mounting Epoxy Resins

CATALOG#

Quick Mounting fast epoxy castable resin (32 oz)	ERF-3000-32
Quick Mounting fast epoxy castable resin (1 gallon)	ERF-3000-128
Quick Mounting fast epoxy castable resin (5 gallons)	ERF-3000-5G

Quick Mounting Epoxy Hardeners

Quick Mounting fast epoxy hardener (8 oz)	EHF-3000-08
Quick Mounting fast epoxy hardener (32 oz)	EHF-3000-32
Quick Mounting fast epoxy hardener (1 gallon)	EHF-3000-128



Specimen Mounting Clips

ULTRATHIN 2 Low Viscosity Epoxy Resins

Low Viscosity castable epoxy resin (32 oz)	ULTRA-3000R-32
Low Viscosity castable epoxy resin (1 gallon)	ULTRA-3000R-128
Low Viscosity castable epoxy resin (5 gallons)	ULTRA-3000R-5G

ULTRATHIN 2 Low Viscosity Epoxy Hardeners

Low Viscosity castable epoxy hardener (8 oz)	ULTRA-3000H-08
Low Viscosity castable epoxy hardener (32 oz)	ULTRA-3000H-32
Low Viscosity castable epoxy hardener (1 gallon)	ULTRA-3000H-128

ULTRATHIN 2 PLUS Low Viscosity Epoxy Resins

Low Viscosity castable epoxy resin (32 oz)	ULTRA-3000R-32P
Low Viscosity castable epoxy resin (1 gallon)	ULTRA-3000R-128P
Low Viscosity castable epoxy resin (5 gallons)	ULTRA-3000R-5GP

ULTRATHIN 2 PLUS Low Viscosity Epoxy Hardeners

Low Viscosity castable epoxy hardener (8 oz)	ULTRA-3000H-08P
Low Viscosity castable epoxy hardener (32 oz)	ULTRA-3000H-32P
Low Viscosity castable epoxy hardener (1 gallon)	ULTRA-3000H-128P

Castable Mounting Accessories

CATALOG#

1-gallon castable pump dispenser	ED-3000-01
1.25-inch specimen storage container - 25/pkg	STORE-0125
Mold release (8 oz)	MR-1000-08
Mold release (16 oz)	MR-1000-16
Metal MKLIP Spring mounting clip (100/pkg)	MKLIP-0100
Plastic SKLIP Spring mounting clip (100/pkg)	SKLIP-0100
Plastic KLIP specimen mounting clip (100/pkg)	KLIP-0100
Plastic MULTICLIP specimen mounting clip(100/pkg)	MULTICLIP-0100
Plastic UNIKLIP specimen clips (100/pkg)	UNIKLIP-0100



ULTRATHIN 2 Low Viscosity Epoxy Resins & Hardeners