



**MEGA-T250S Manual  
 Abrasive Cutter**

- 10-inch wheel saw
- 1500-3500 rpm Variable speed cutting
- 2-15 amp adjustable current draw for fine cutting control
- Manual cutting
- High torque servo motor
- Overload flashing red light in chamber to warn of motor overload
- Wheel and table feed cutting
- 5-inch no touch high resolution display
- Electronic braking for safety
- Removable side panels for pass through longer samples
- Highly reproducible
- External rinse nozzle for easy cleaning
- Cutting capacity up to 3-inch

- (75 mm solid stock or 2.25 x 6-inch (55 x 150 mm) samples using 250 mm (~10-inch) blade
- Powerfull 5.5 (4 KW/13Nm) constant torque servo motor
- Twin t-slotted stainless steel tables
- Easy to use



**MEGA-T250S  
 Abrasive  
 Cutter**

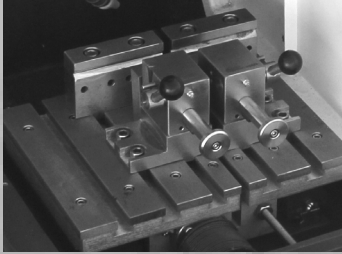
**MEGA-T250S  
 Variable Speed  
 250 mm (~10-inch)  
 Abrasive Saw**

**Applications:**  
 -Ferrous metals  
 -Non-ferrous metals

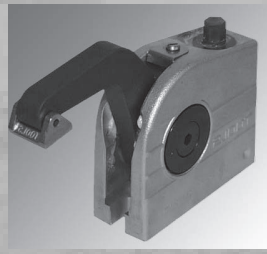
-Foundry castings  
 -Power metallurgy  
 -Heat treated parts  
 -Specialty alloys  
 -Wrought metals



## Clamping Systems for MEGA-T250S Cut-off Machines



Fast Cam Locking Vice



Vertical Clamping Vice

## Clamping Devices

Proper clamping or fixturing is required to prevent blade breakage and to optimize the cut. Vises range from a vertical clamping vise to fast cam locking devices.

Fast cam locking vise, right	Fast cam locking vise, left	Vertical clamping vise	65 mm (2.6-in) height adapter for Vertical vise	Adjustable mechanical stop
QCR-1100	QCL-1100	MG-01	MG-H	MG-0150

## Abrasive Cutting Fluids

Pace Product Name	Catalog Number	Packaging
MAXCUT Abrasive Cutting Fluid	MAXCUT-1000-128	1 gallon
MAXCUT Abrasive Cutting Fluid	MAXCUT-1000-5G	5 gallons
MAXCUT 2 Cutting Fluid with Anti-corrosion Additive	MAXCUT2-1000-128	1 gallon
MAXCUT 2 Cutting Fluid with Anti-corrosion Additive	MAXCUT2-1000-15G	5 gallons

## 10-inch (250 mm) MAXCUT Abrasive Blades (32 mm Arbor)

Pace Product Name	Catalog Number	Packaging
Soft non-ferrous metals (aluminum, tin, copper, zinc, etc.)	MAX-E250	10
Hard non-ferrous metals (titanium)	MAX-C250	10
Soft steels	MAX-E250	10
Case hardened steels	MAX-VHS250	10
Hard Steels	MAX-VHS250	10
Universal Thin Blade	MAX-A250	10
General Purpose Blade	MAX-I250	10
Diamond Blade	DMAX-250	each



**PACE<sup>®</sup>**  
**TECHNOLOGIES**  
[www.metallographic.com](http://www.metallographic.com)

3601 E. 34th St.  
 Tucson, AZ 85713 USA  
 Phone +1-520-882-6598  
 FAX +1-520-882-6599  
<https://www.metallographic.com>  
 email [pace@metallographic.com](mailto:pace@metallographic.com)



## Technical Data

Specification	MEGA-T250S
Cut-off size (Blade diameter)	250 mm (10-inch)
Arbor size	32 mm (~1.25-inch)
Cutting Capacity	Max diameter 3-inch (75 mm)
Cutting Capacity (HxD)	Maximum 2.25 x 6-inch (55 x 150 mm)
Wheel Feed & Table Feed	Manual
Vertical movement (z-axis)	4-inch (100 mm)
Table feed movement (y-axis)	4-inch (100 mm)
Screen display	5-inch non-touch
Dimensions (WxDxH)	30 x 32 x 28-inch (hood closed) 30 x 39 x 37-inch (hood open)
Table Dimensions	11 x 18.25-inch t-slot (280 x 470 mm)
Cooling Unit	14 gallons (53l)
Motor Power	3.9 hp (2.9KW/13Nm) (3-phase servo motor)
Speed (rpm)	Variable: 1500-3500 rpm
Electrical Specifications	208Y, 380V 50/60 Hz (3-phase)
Model Type	Bench
Weight	375 lbs (170 kg)