

This module is specific for Measurement



MEASUREMENT

ABOUT THE MEASUREMENT

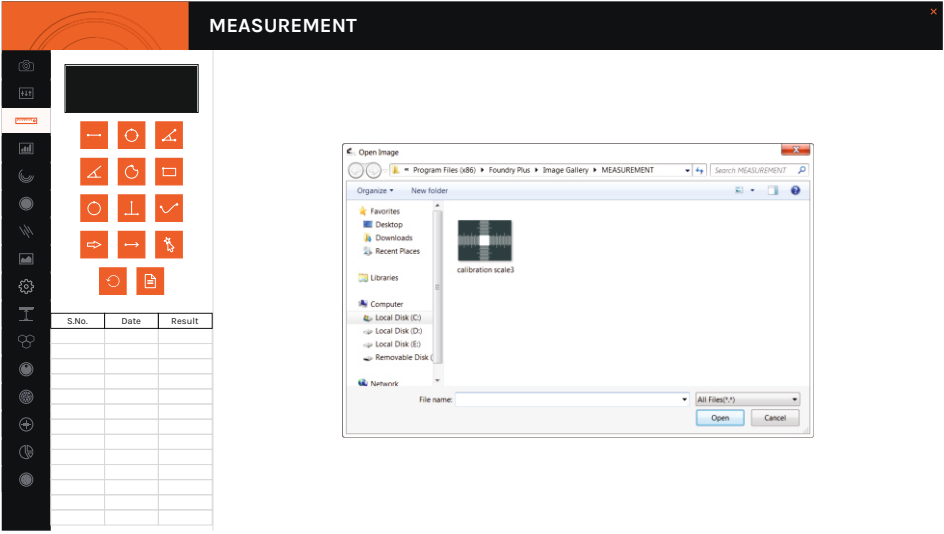
With the Measurement module one can obtain measurement on manually drawn lines on traces, shapes or by outlining an object which cannot be accumulated and logged on to the results worksheet from where they can be stored to a file, printed or transferred to spread sheet for further analysis or

statistics. The unit of the measurement depends on the currently selected spatial calibration. The following set of the measurements can be obtained using this mode :-

- STRAIGHT LENGTH** : Distance between the two end points of a straight Line.
- ANGLE** : Angle is a degree between two straight lines.
- CURVED LENGTH** : Length of irregular object.
- WIDTH** : The minimum, maximum and mean distance between two lines or irregular traces or outlines.
- AREA** : Area of an enclosed shape by outlining with any one of the tools provided in the software.
- RADIUS** : Three points radius of enclosed shape.
- PERIMETER** : Length of line surrounding an object.
- AREA BY KEY** : Area of surface measured by the line drawn by arrow keys of keyboard.

1st Step

Fig-44



2nd Step

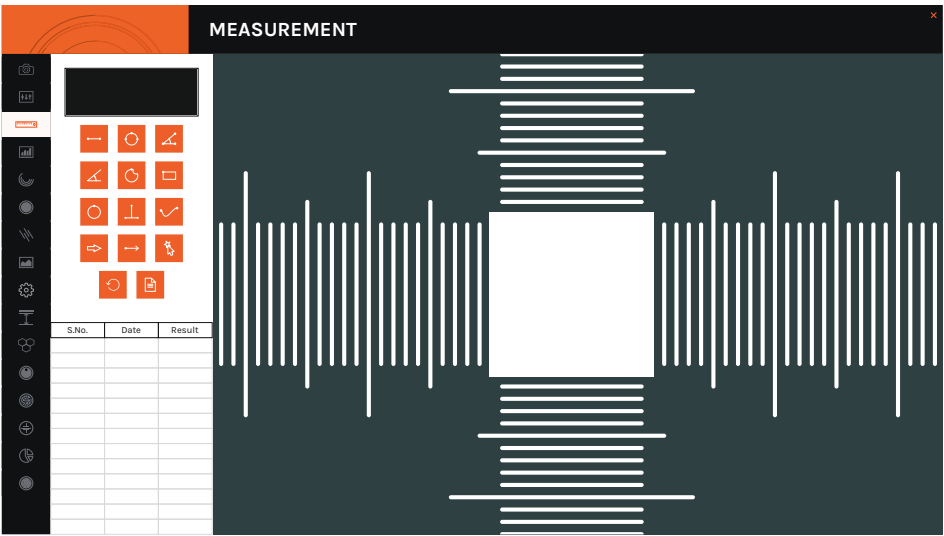


Fig-45