


Example: Grain Size Analysis - Grain Selection Method

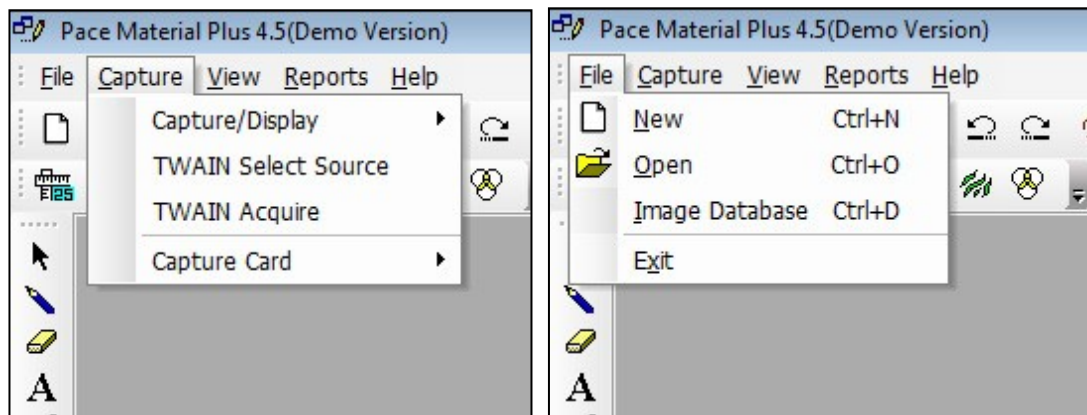
Individual grain sizes can be determined by area by selecting a specific grain.

PROCEDURE:

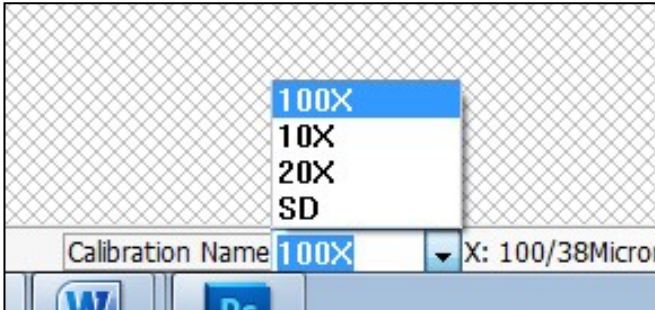
1. Load the image for grain size measurement.
2. Select the appropriate saved calibration scales from the drop down list at the bottom of the Window
3. Click on the Grain Size icon  either from the Toolbar or from the Menu-bar
4. Grain Size Measurement dialogue box will open. Select Grain Selection method.
5. Click on SET THRESHOLD. A new platform with two scroll bars will appear. Move both scroll bars till all the boundaries are properly pseudo colored (filled with red). Click on OK.
6. Select the grain by clicking the mouse in the middle of the grain. The Grain Number is automatically calculated and the corresponding data will appear in the text box.
7. To delete the data from the data grid, click on DELETE ALL. To undo previous operations, click on UNDO.
8. To save the report, click on REPORT
9. A sample information window will appear. Fill the required information. Click on “Save Data For Report Tool”
- 10 Click on “TO EXCEL” to see the result in Excel.


EXAMPLE of Grain Size – Selection Method

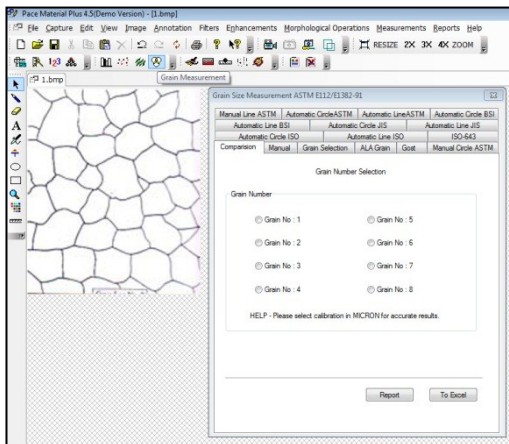
1. File > Open (select image) or Capture > TWAIN Acquire (for live image)



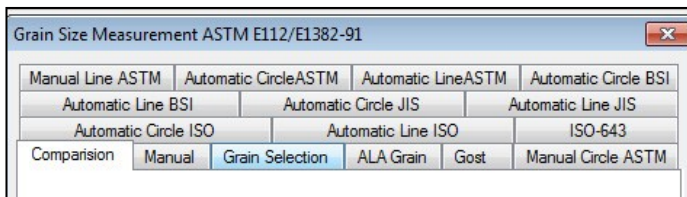
2. Select Calibration scale at bottom of the Window



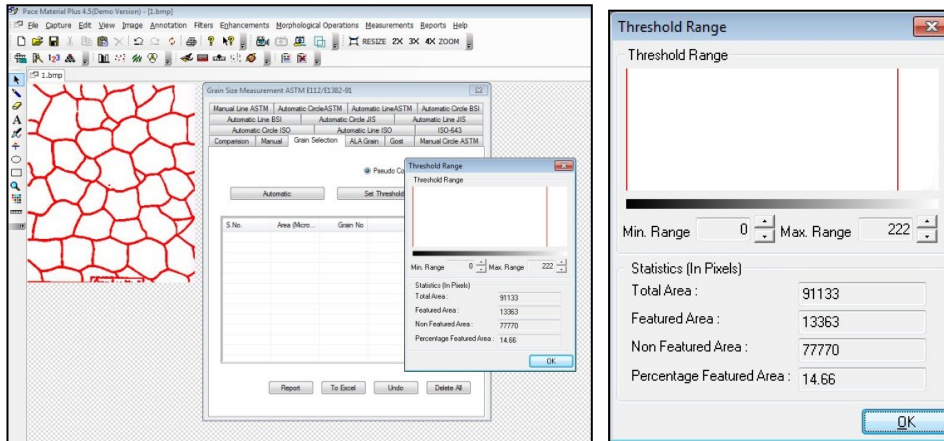
3. Click on the Grain Size icon  either from the Toolbar or from the Menu-bar



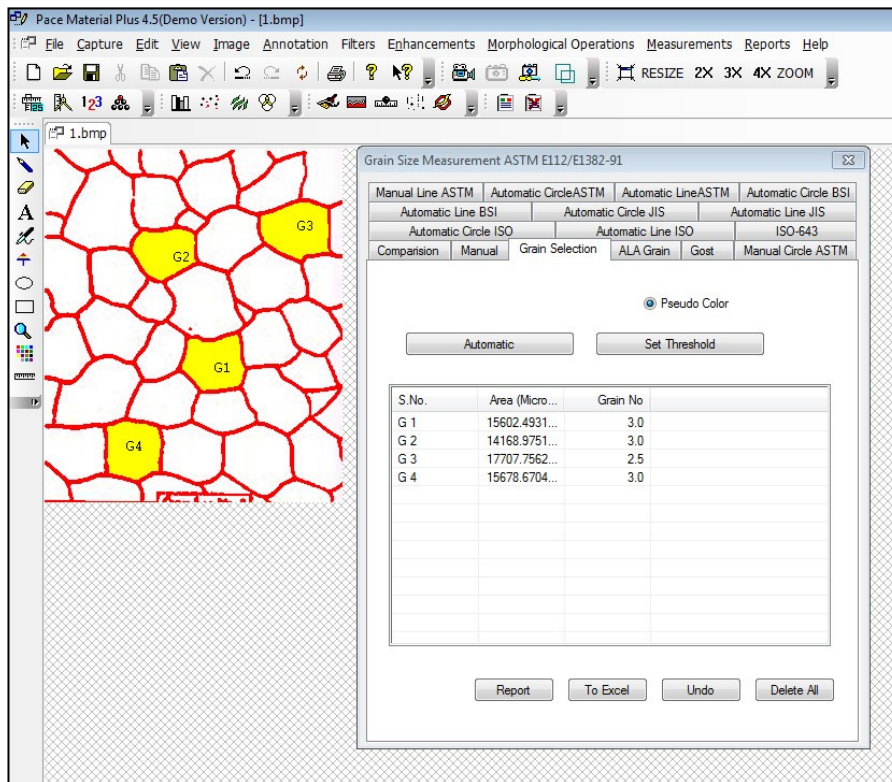
4. Grain Size Measurement dialogue box will open. Select Grain Selection method.



5. Click on SET THRESHOLD. A new platform with two scroll bars will appear. Move both scroll bars till all the boundaries are properly pseudo colored (filled with red). Click on OK.

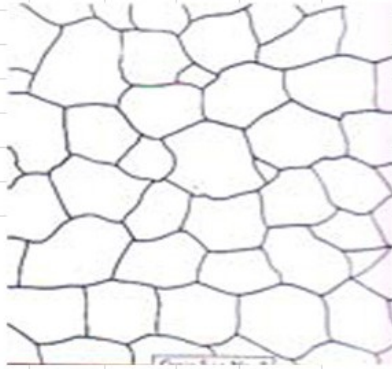
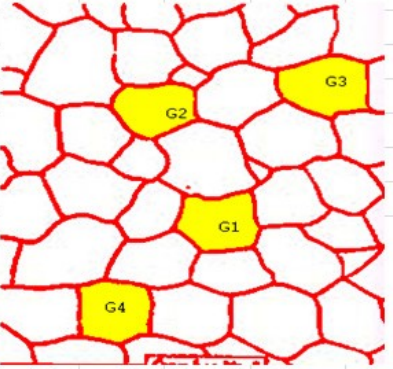


6. Select the grain by clicking the mouse in the middle of the grain. The Grain Number is automatically calculated and the corresponding data will appear in the text box.



7. To delete the data from the data grid, click on DELETE ALL. To undo previous operations, click on UNDO.
8. To save the report, click on REPORT

9. A sample information window will appear. Fill the required information. Click on “Save Data For Report Tool”
10. Click on “TO EXCEL” to see the result in Excel.

MICROMEASUREMENT TEST REPORT				
NAME :			APPLICATION :	
EVALUATION DATE :			OPERATOR :	
SAMPLE INFO ID :			MICROSCOPE OBJ :	
 				
Grain Selection ASTM E512&E1391				
St. No.	Description	Area	Grain No.	
1	G 1	15602.4931 MicronSqr	3	
2	G 2	14168.9751 MicronSqr	3	
3	G 3	17707.7562 MicronSqr	2.5	
4	G 4	15678.6704 MicronSqr	3	