


Example: Flake

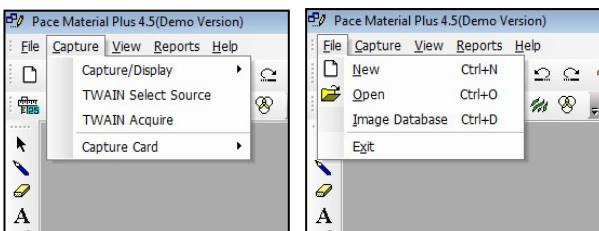
This module is designed to analyze graphite flake length, width, distribution and percentage in gray cast iron as per ASTM A-247-67.

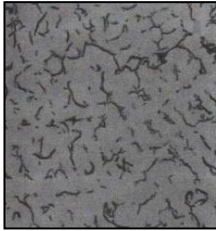
PROCEDURE:

1. Load the gray cast iron image for flake measurement.
2. Select the appropriate saved calibration scales from the drop down list at the bottom of the Window
3. Click on the Nodularity icon  either from the Toolbar or from the Menu-bar
4. Three options are available to identify graphite flakes for further analysis:
 - MANUAL
 - AUTOMATIC DARK
 - AUTOMATIC BRIGHT
5. Automatic Bright and Automatic Dark have present intensity ranges to identify the flakes. If all the necessary flakes do not automatically fill with the color red, change to the MANUAL detection mode and adjust the threshold scroll bars until all the flakes are pseudo-colored. Click OK.
6. After setting the intensity range, click MEASURE. The results are displayed in the grid.
7. To analyze the flake type, choose AUTOMATIC from Flake Type in the window. Flake Type Results will show the percentage of Type A,B,C,D,E and Combined.
8. Click ADD to add additional data fields.
9. To save the report, click on REPORT.
10. A sample information window will appear. Fill the required information. Click on "Save Data For Report Tool"
11. Click on "TO EXCEL" to see the result in Excel.

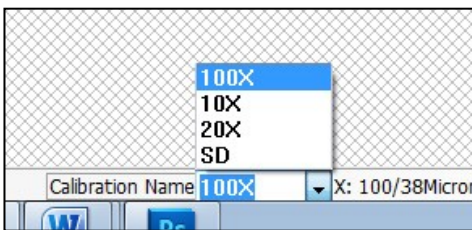
EXAMPLE of Cast Iron Flake Analysis


1. File > Open (select image) or Capture > TWAIN Acquire (for live image)

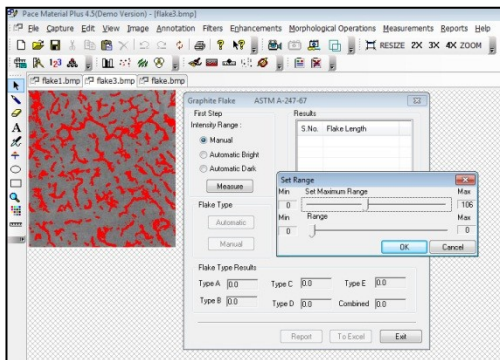




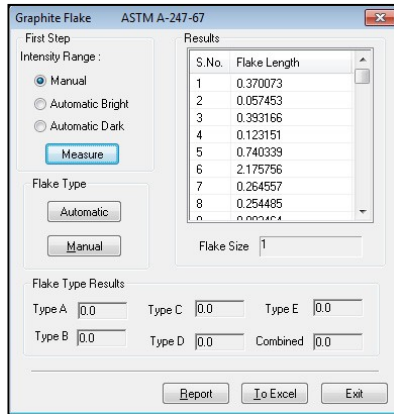
2. Select Calibration scale at bottom of the Window



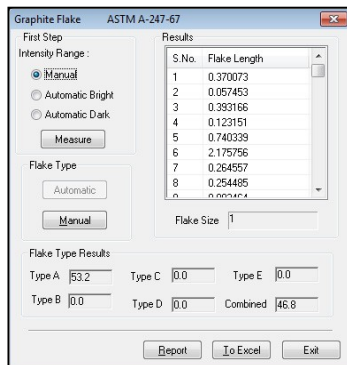
3. Click on the Nodularity icon  either from the Toolbar or from the Menu-bar
4. Three options are available to identify graphite flakes for further analysis:
- MANUAL
 - AUTOMATIC DARK
 - AUTOMATIC BRIGHT



5. Automatic Bright and Automatic Dark have present intensity ranges to identify the flakes. If all the necessary flakes do not automatically fill with the color red, change to the MANUAL detection mode and adjust the threshold scroll bars until all the flakes are pseudo-colored. Click OK.
6. After setting the intensity range, click MEASURE. The results are displayed in the grid.



- To analyze the flake type, choose AUTOMATIC from Flake Type in the window. Flake Type Results will show the percentage of Type A,B,C,D,E and Combined.



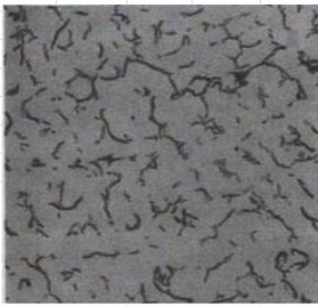
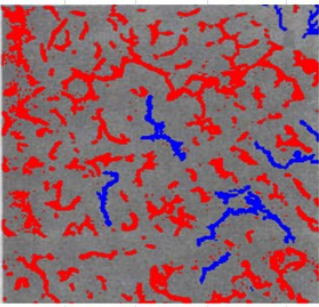
- Click ADD to add additional data fields.
- To save the report, click on REPORT.
- A sample information window will appear. Fill the required information. Click on "Save Data For Report Tool"
- Click on "TO EXCEL" to see the result in Excel.

Grainsize2 [Compatibility]

File Home Insert Page Layout Formulas Data Review View

Cut Copy Paste Format Painter Clipboard Font Alignment Number

S13

MICROMEASUREMENT TEST REPORT												
6	NAME :						APPLICATION :					
7	EVALUATION DATE :						OPERATOR :					
8	SAMPLE INFO ID :						MICROSCOPE OBJ :					
9												
10												
11												
12												
13												
14	Flake Size	Flake A	Flake B	Flake C	Flake D	Flake E	Flake Comb					
15	1	53.2	0	0	0	0	46.8					
16												
17												
18												
19												